



US 1 Bridge Replacement Project

from CR A1A to CR 707

Progress Update – October 2024

Financial Project ID#: 428400-2-52-01

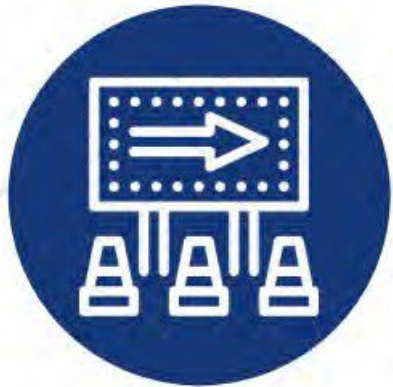
Federal Aid #: D421056B



KEY SUCCESSES

- ❑ Complete all intersection improvements, existing Alternate A1A bridge repairs and installation of new traffic communication devices for the detour route.
- ❑ Implementation of SMART Work zone for Detour which connected all major intersections with Palm Beach County Traffic Management Center. The detour has been closely monitored and signal timing adjustments made as needed to improve traffic flow.
- ❑ Vibration monitoring of the Museum and lighthouse during foundation installations ensured the structural integrity of these historic landmarks were not compromised.
- ❑ Completion of the foundation installations with unfavorable environmental conditions and restrictions.
- ❑ Bascule Piers Exterior Wall face re-design allowed the wall to be precast in effort to safeguard the architectural features of the wall.
- ❑ Successfully coordinated all utility relocations without impacting construction including FPL and FGT subaqueous lines.
- ❑ Implemented a safety design change to incorporate a new pedestrian detection system into bridge operational control system

PROJECT SCHEDULE *(subject to change)*



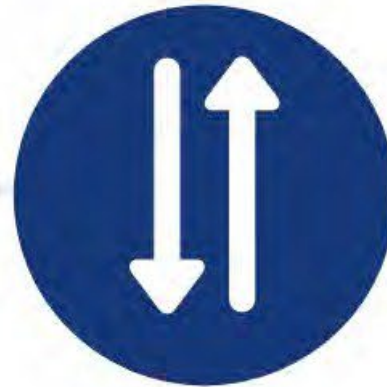
Fall 2021

Pre-detour Phase
Construction Began



Spring 2023

Detour Phase
Began



Early 2025

Detour Phase Ends
*(One lane in each direction
open to traffic.)*



Spring 2025

New Bridge Construction
Completed
(All four lanes open to traffic.)



Early 2026

Project Completion

PROGRESS UPDATE – SOUTH SIDE APPROACH



PROGRESS UPDATE – SOUTH SIDE APPROACH



PROGRESS UPDATE – BASCULE PIERS



PROGRESS UPDATE – BASCULE PIERS



PROGRESS UPDATE – MECHANICAL



Trunnion Assembly



Pinnion Assembly



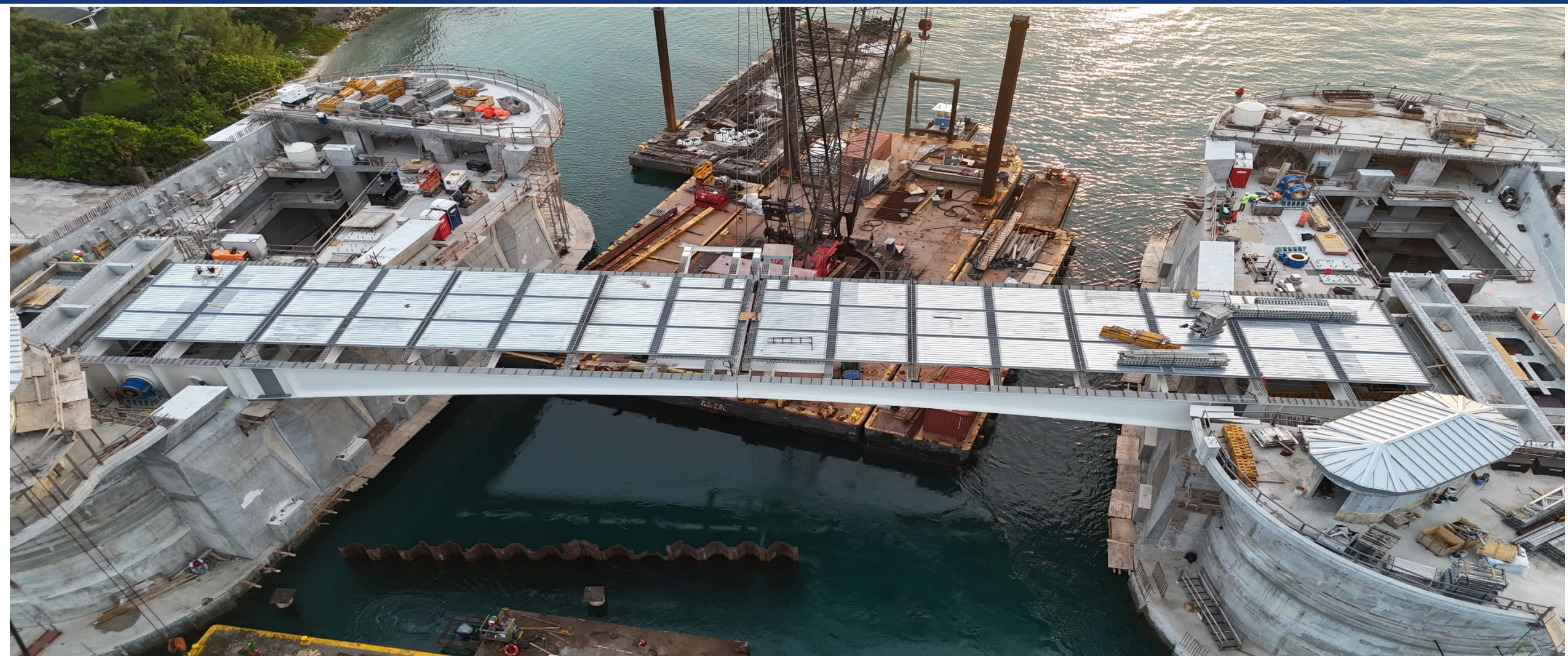
Hydraulic Power Unit Assembly

PROGRESS UPDATE – ELECTRICAL



Control System Equipment

PROGRESS UPDATE – BASCULE SPANS



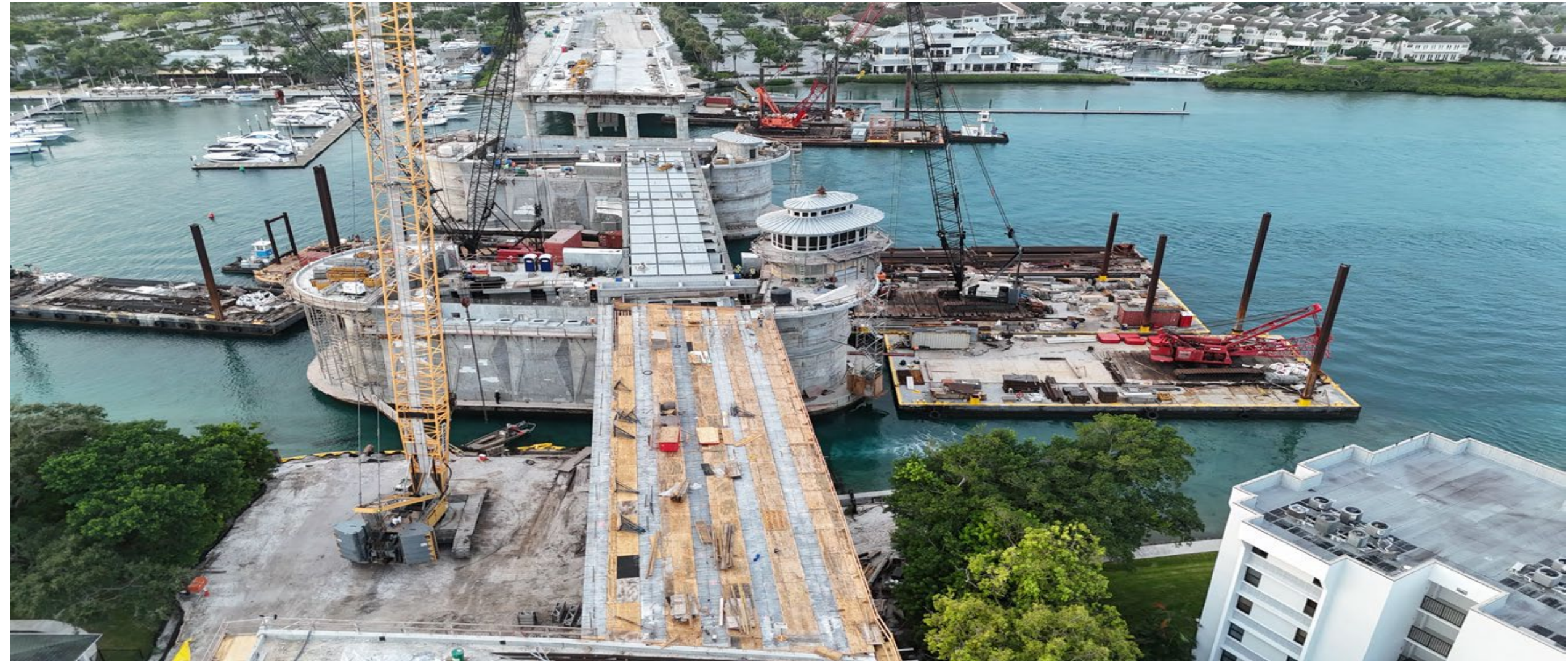
PROGRESS UPDATE – CONTROL HOUSE



PROGRESS UPDATE – CONTROL HOUSE



PROGRESS UPDATE – NORTHSIDE APPROACH



PROGRESS UPDATE – NORTHSIDE APPROACH



PROGRESS UPDATE – NORTHSIDE APPROACH



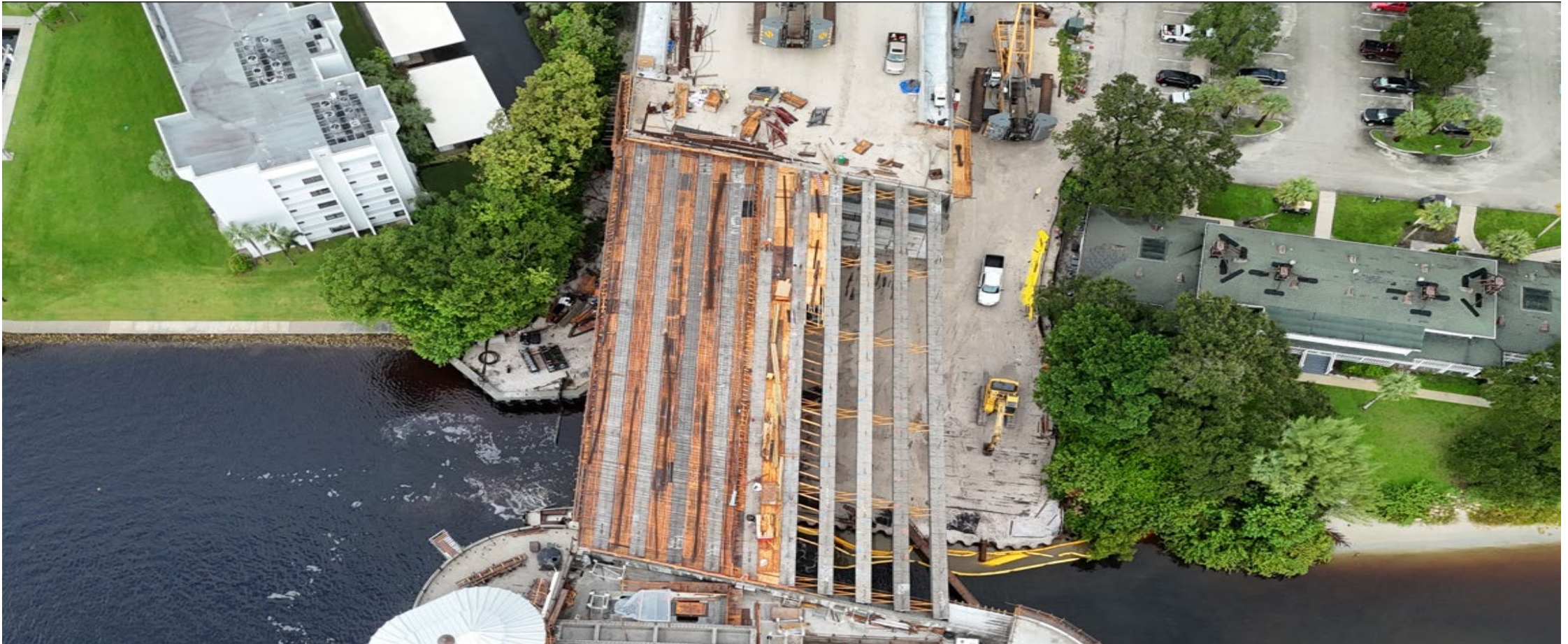
REMAINING MILESTONES TO OPEN WEST SIDE OF BRIDGE TO TRAFFIC

Major activities over the following months include...

- ❑ **POUR CONCRETE DECK FOR SPAN 5**, north side of bascule bridge
- ❑ **POUR CONCRETE DECK ON BASCULE BRIDGE**, northwest leaf then southwest leaf
- ❑ **SHIFT BOAT TRAFFIC INTO THE MAIN CHANNEL**, under the bascule bridge
- ❑ **SET BEAMS FOR SPAN 3**, south side of bascule bridge
- ❑ **POUR CONCRETE DECK FOR SPAN 3**, south side of bascule bridge
- ❑ **PAVE THE BRIDGE APPROACHES**, south side then north side of project
- ❑ **COMPLETE BRIDGE INSPECTIONS AND FUNCTIONAL CHECKOUT**
- ❑ **SAFELY OPEN ONE LANE OF TRAFFIC IN EACH DIRECTION!**

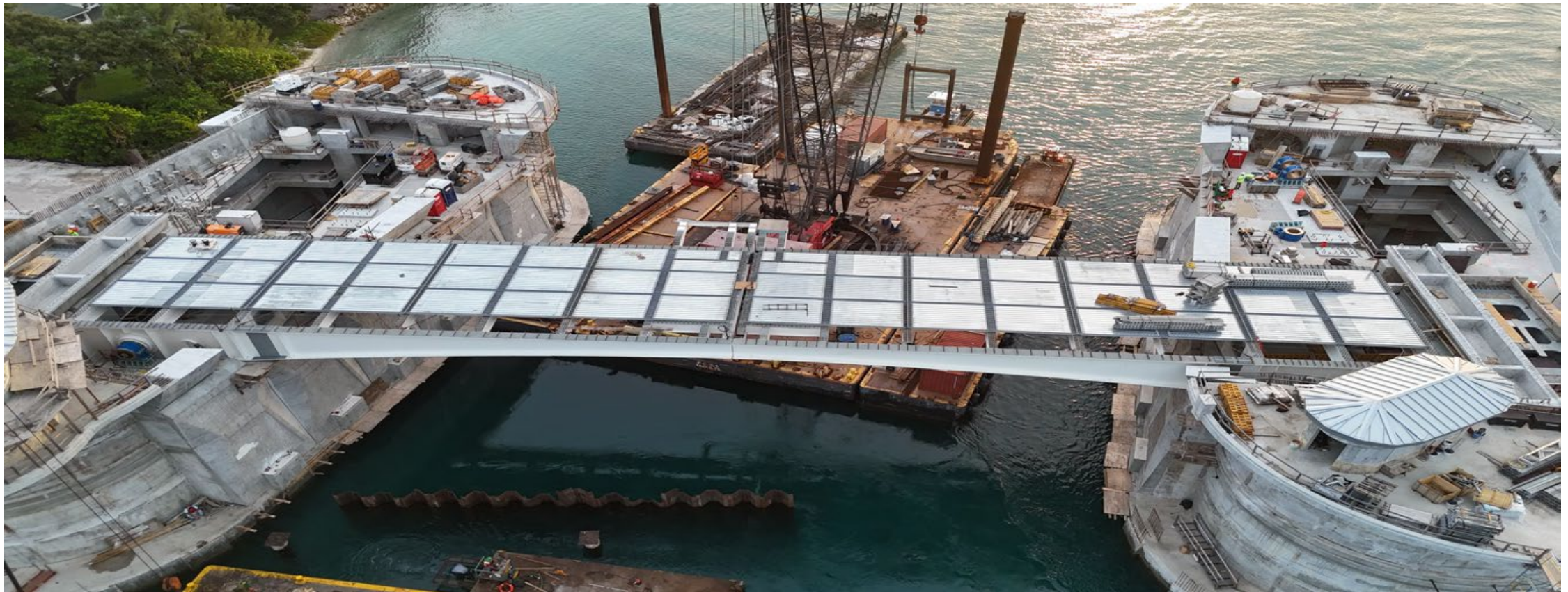
STATUS OF REMAINING MILESTONES TO OPEN WEST SIDE OF BRIDGE TO TRAFFIC

POUR CONCRETE DECK FOR SPAN 5, north side of bascule bridge



STATUS OF REMAINING MILESTONES TO OPEN WEST SIDE OF BRIDGE TO TRAFFIC

POUR CONCRETE DECK ON BASCULE BRIDGE, northwest leaf then southwest leaf
SHIFT BOAT TRAFFIC INTO THE MAIN CHANNEL, under the bascule bridge



STATUS OF REMAINING MILESTONES TO OPEN WEST SIDE OF BRIDGE TO TRAFFIC

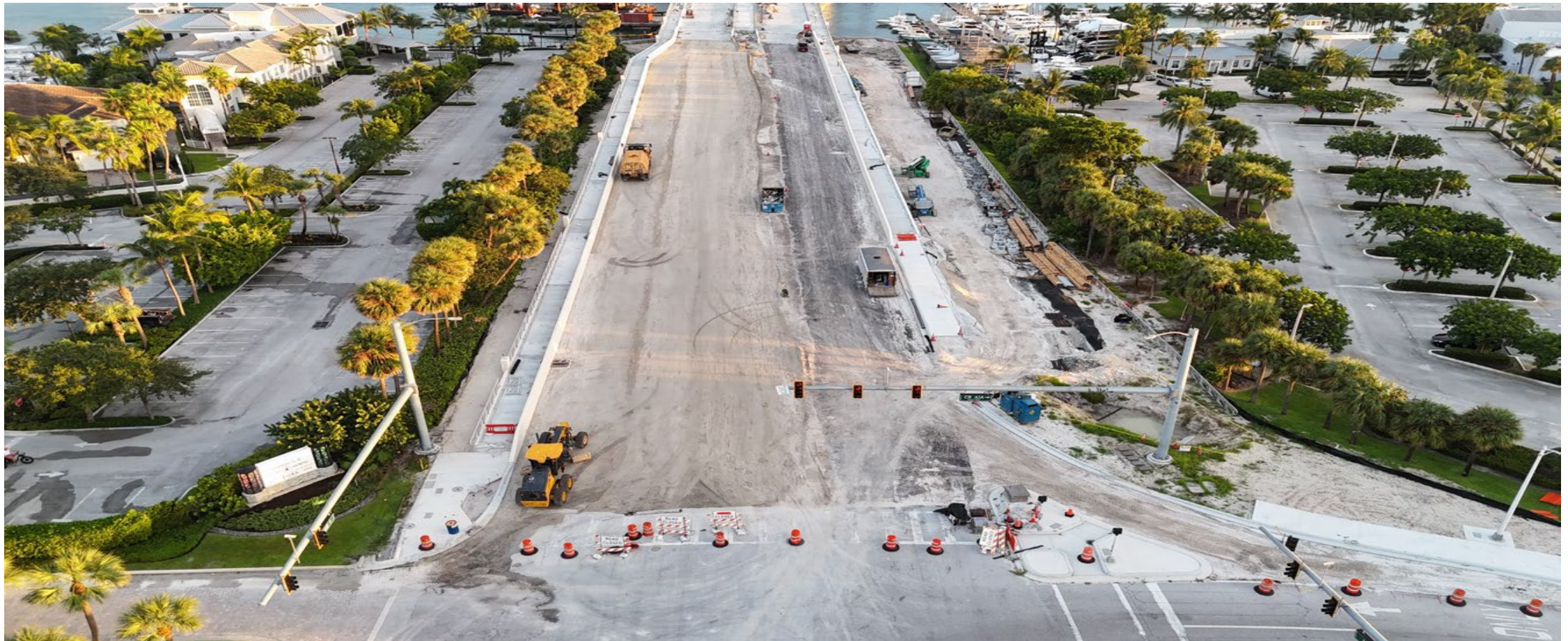
SET BEAMS FOR SPAN 3, south side of bascule bridge

POUR CONCRETE DECK FOR SPAN 3, south side of bascule bridge



STATUS OF REMAINING MILESTONES TO OPEN WEST SIDE OF BRIDGE TO TRAFFIC

PAVE THE BRIDGE APPROACHES, SOUTH SIDE



STATUS OF REMAINING MILESTONES TO OPEN WEST SIDE OF BRIDGE TO TRAFFIC

PAVE THE BRIDGE APPROACHES, NORTH SIDE



SPRING 2025 MILESTONE

OPEN EAST SIDE OF BRIDGE TO TRAFFIC



SUMMER 2025 MILESTONE

OPEN RIVERWALK CONNECTION UNDER SOUTH SIDE OF BRIDGE



SPRING 2026 MILESTONE

PROJECT COMPLETION!



ADDITIONAL COMMENTS / QUESTIONS

THANK YOU!

